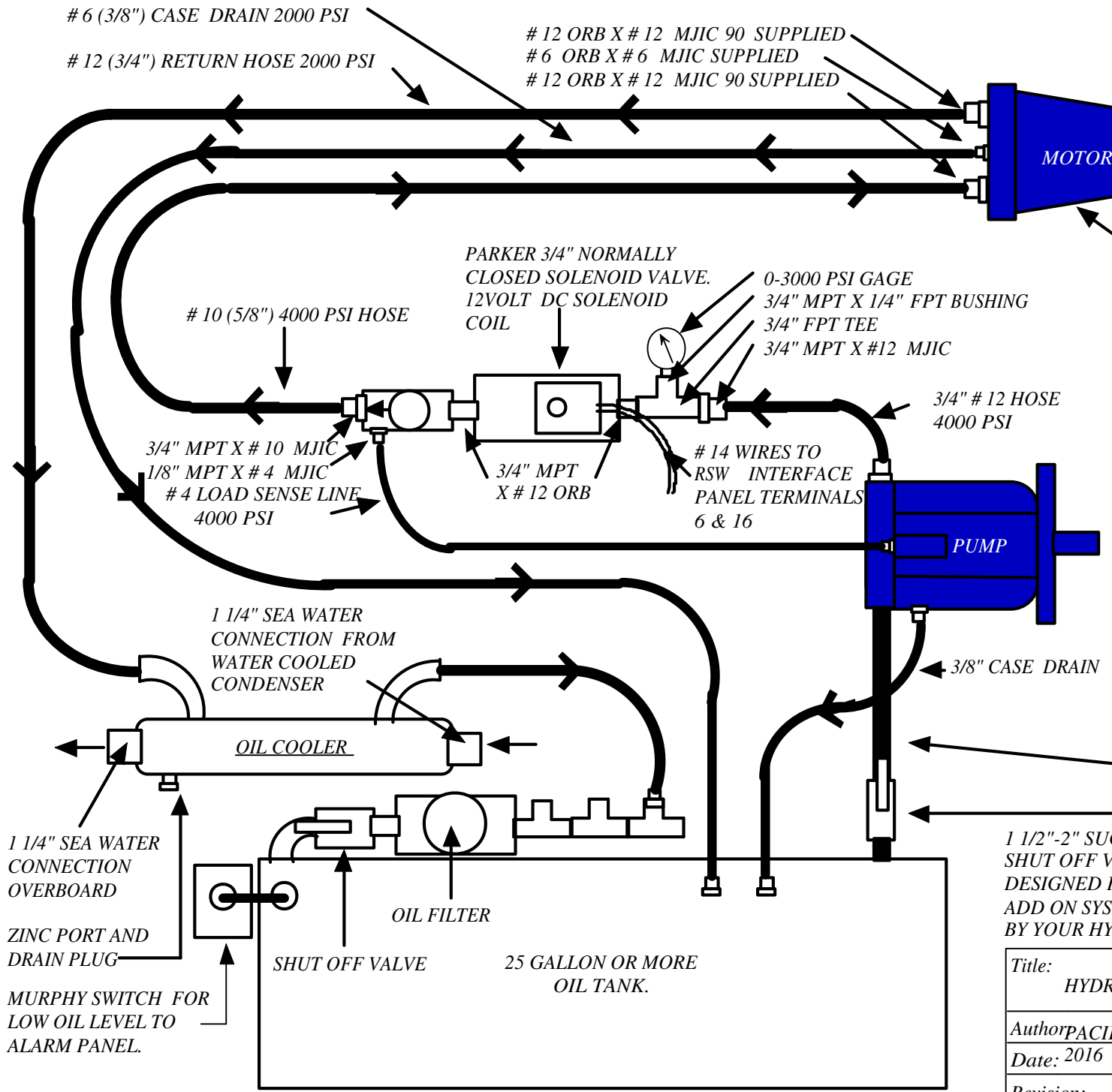


PWR CHILLER PACK HYDRAULIC PIPING SCHEMATIC



ROTATION: MATCH
ARROW DIRECTION
ON SIDE OF MOTOR
WITH ARROW DIRE-
CTION ON CIRC.
PUMP. INSTALL PRESSURE
LINE HERE.

2 CU.IN EATON HYDRAULIC
MOTOR ON YOUR PWR CHILLER
PACK. BOTTOM VIEW OF MOTOR
SHOWS LINE CONNECTION
FOR PROPER ROTATION.
CASE DRAIN AT TOP OF MOTOR.
PRESSURE LINE IS ON CHILLER
SIDE.

EATON 420 LOAD SENSING PUMP
4.88 CU IN. (SIZE DEPENDS
ON MAIN ENGINE HORSEPOWER)
RATED FLOW IS 15 GAL. AT 2100
PSI TO DRIVE RSW MOTOR AT
1800 RPM. HORSEPOWER TO DRIVE
RSW IS APPROX. 18 HP. A SMALLER
PUMP MAYBE DESIRABLE TO
REDUCE ENGINE HORSEPOWER
REQUIREMENTS WHEN ENGINE
IS AT AN IDLE.

1 1/2"-2" SUCTION HEADER, OIL FILTER,
SHUT OFF VALVE FOR SYSTEMS
DESIGNED FOR RSW SYSTEM ONLY
ADD ON SYSTEMS SHOULD BE ENGINEERED
BY YOUR HYDRAULIC SPECIALIST.

| | |
|---|--------|
| Title: HYDRAULIC LAYOUT FOR 10 TON RSW | |
| Author: PACIFIC WEST REFRIGERATION | |
| Date: 2016 | Sheet: |
| Revision: | |